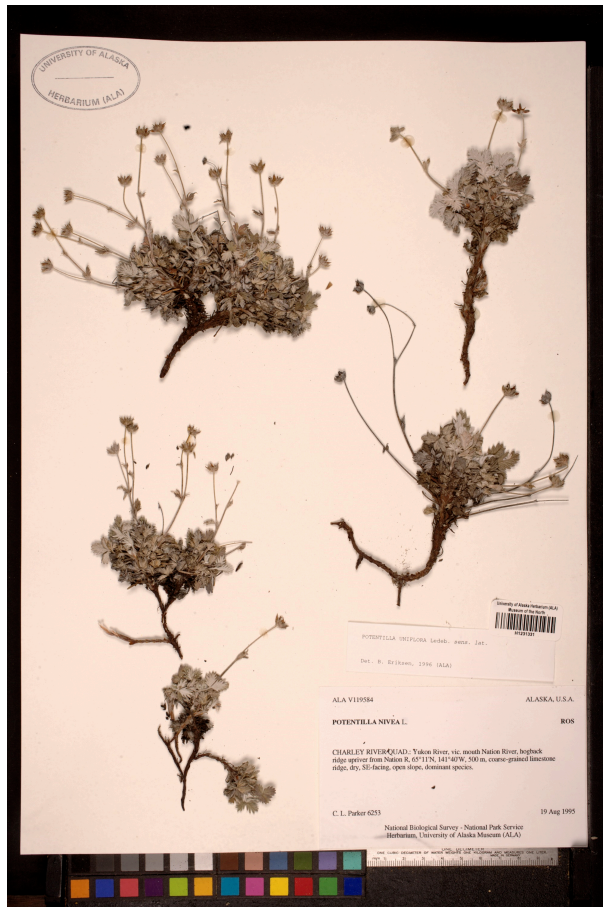


Distinguishing *Potentilla nivea* and *Potentilla villosa*: A Systematic Approach

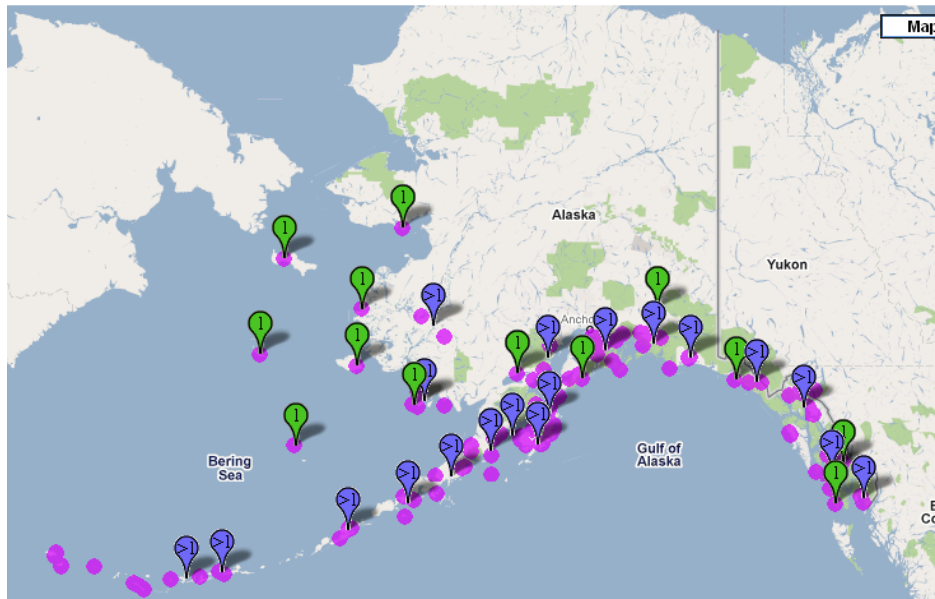
Prepared by James Smith



Potentilla villosa

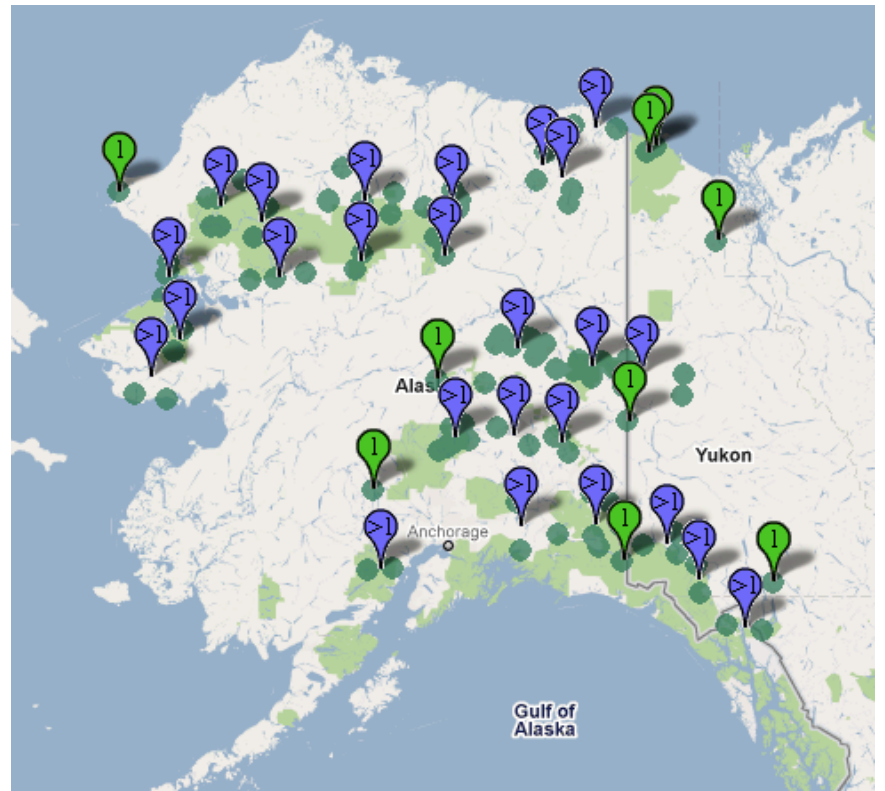


Potentilla nivea

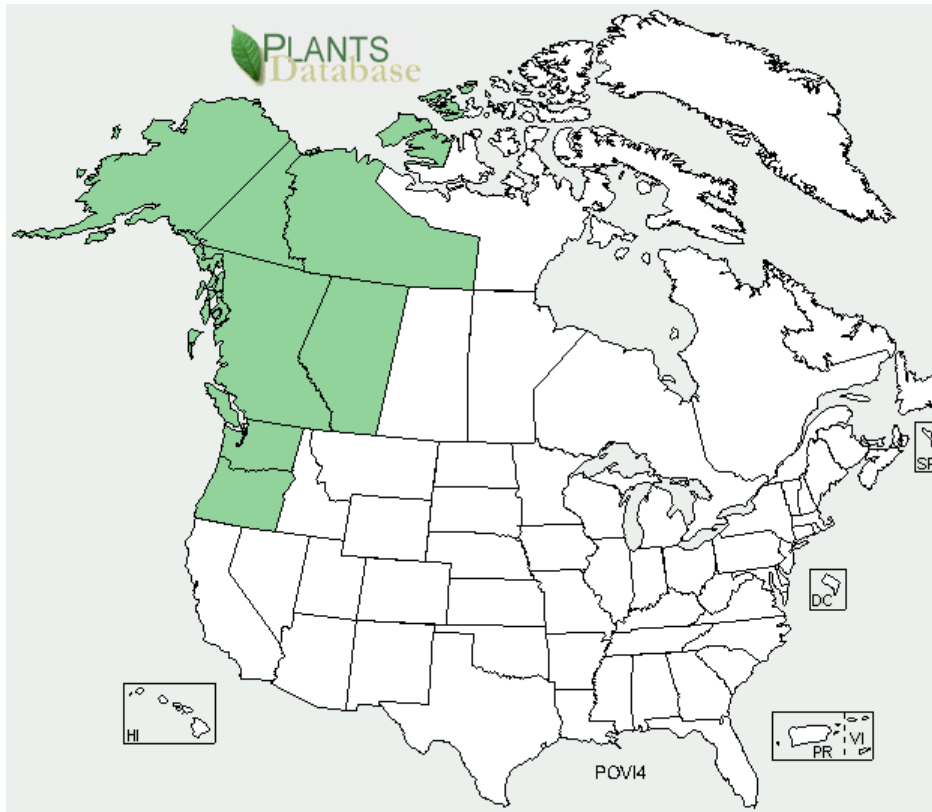


Potentilla villosa

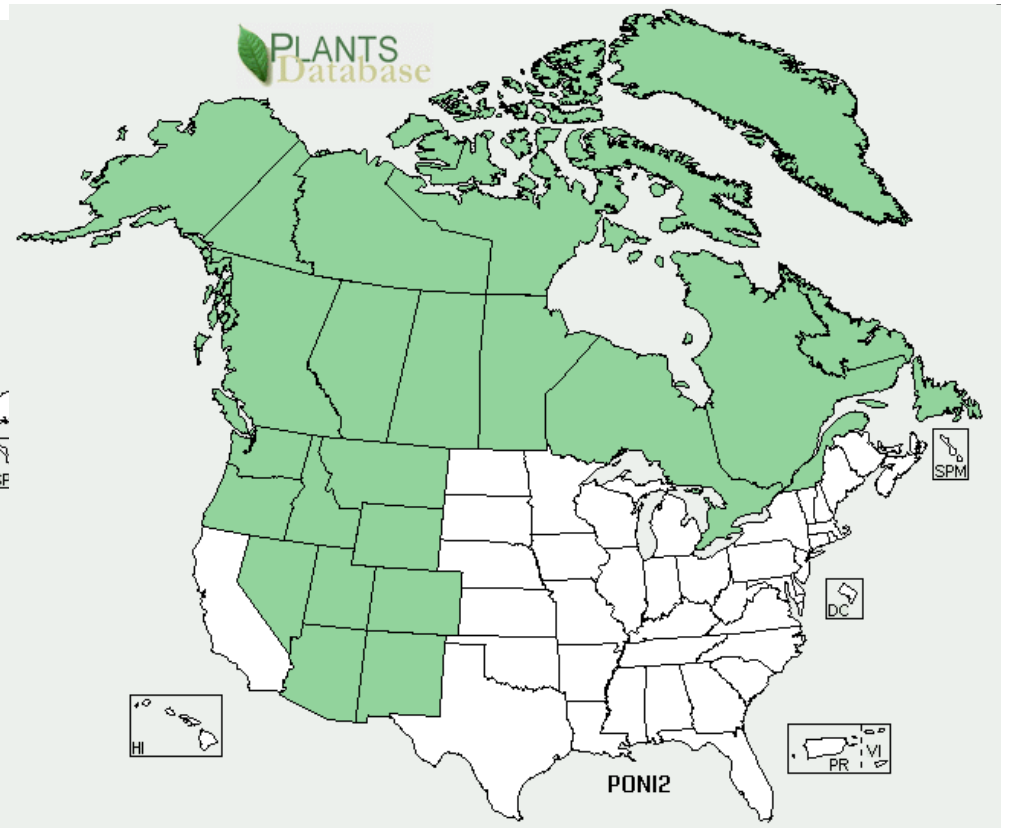
UA Museum Herbarium
sample locations



Potentilla nivea



Potentilla villosa



Potentilla nivea

Potentilla nivea and *Potentilla villosa*



- Leaves only abaxially pubescent or with slight adaxial pubescence
- no pubescence immediately below stem leaves
- calyx and epicalyx differing-lanceolate-ovate-elliptic



- Leaves adaxially and abaxially pubescent
- Pubescence present below stem leaves
- Calyx and epicalyx ovate-elliptic

Potentilla nivea and *Potentilla villosa*



Leaves only abaxially pubescent or
with slight adaxial pubescence



Leaves adaxially and
abaxially pubescent

Potentilla nivea and *Potentilla villosa*



No pubescence immediately
below stem leaves



Pubescence present below
stem leaves

Potentilla nivea and *Potentilla villosa*



Calyx and epicalyx differing
-lanceolate-ovate-elliptic



Calyx and epicalyx
ovate-elliptic